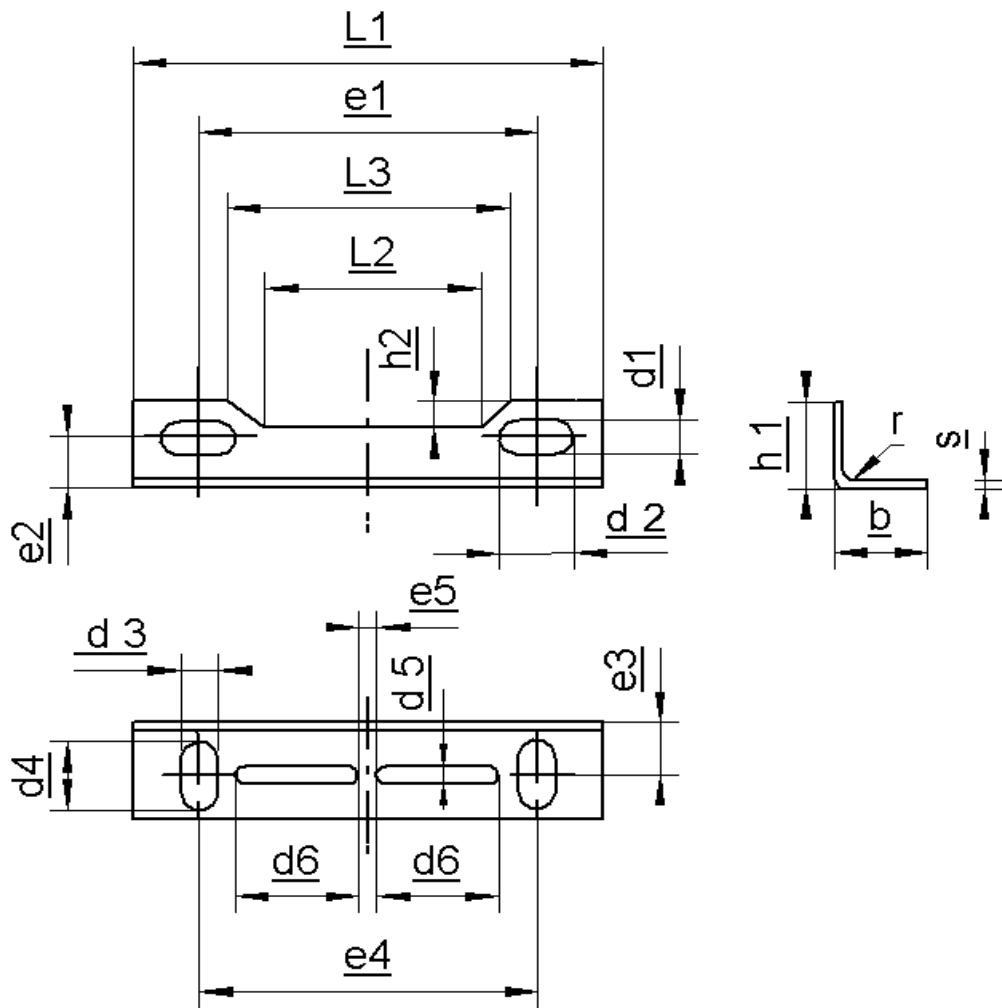


## Datenblatt Fußwinkel



Typ	b	d1	d2	d3	d4	d5	d6	e1	e2	e3	e4	e5	h1	h2	L1	L2	L3	r	s
W 1	15,0	3,2	6,0	M3	M3	3,2	24,0	33,0	7,5	7,5	32,0	-	10,5	2,5	42,0	22,0	27,0	1,5	1,5
W 4	13,0	3,6	7,0	3,6	7,0	3,6	35,0	43,5	9,5	7,5	44,0	-	13,0	4,0	55,0	32,0	35,0	1,6	1,0
W 5	13,0	3,6	3,6	3,6	7,0	3,6	35,0	50,0	9,5	7,5	44,0	-	13,0	4,0	60,0	38,0	-	1,6	1,0
W 11	15,0	4,8	9,0	4,8	9,0	3,6	16,0	52,0	10,5	8,5	50,0	5,0	15,0	4,0	65,0	38,0	42,0	1,6	1,5
W 12	15,0	4,8	9,0	4,8	9,0	3,6	20,0	60,0	11,0	8,5	56,0	5,0	17,0	4,5	73,0	46,0	49,0	1,6	1,5
W 13	15,0	4,8	9,0	4,8	9,0	3,6	24,0	71,0	11,0	8,5	64,0	5,0	17,0	4,5	85,0	54,0	-	1,6	1,5
W 15	20,0	5,8	5,8	5,8	11,0	3,6	35,0	80,0	14,0	12,0	84,0	3,0	20,0	4,5	96,0	61,0	-	2,5	2,0
W 16	20,0	5,8	11,0	5,8	11,0	3,6	35,0	88,5	14,0	12,0	84,0	3,0	20,0	4,5	104,0	68,0	74,0	2,5	2,0
W 18	25,0	7,0	7,0	5,8	11,0	3,6	35,0	115,0	16,0	17,0	104,0	5,0	25,0	5,5	130,0	90,0	-	2,5	2,0